

OFFICE SPACE FOR LEASE

RIVER VIEW CORPORATE CENTER

16201 E. Indiana Avenue, Spokane Valley, WA 99216

(509) 328-3029

Best Space – Best Price – Best Service



SUITE 3000

26,947+/- RSF

Annual Rent: \$24.00-\$25.50/FT
Full-Service

Amenities Include:

- * Located 12 minutes from Downtown
- * Access to the Centennial Trail
- * Two Conference Rooms--Internet and Phone Hookups
- * Exercise Facility with Showers and Lockers
- * Free Parking
- * Great I-90 Access
- * On-Site Management
- * Upscale Tenant Improvements
- * Full Service Lease
- * Janitorial Included
- * Custom Designed Suites

Information and Video
are available at our website.

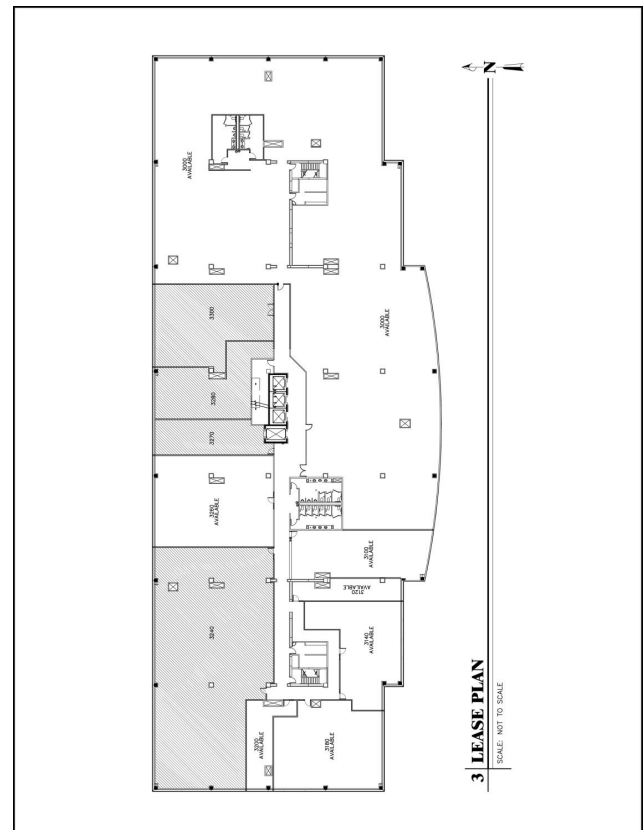
www.rvccspokane.com

FOR A SHOWING OR ADDITIONAL
INFORMATION PLEASE CALL:

Jack Marr, Director of Leasing
BLOCH RIVER VIEW, LLC

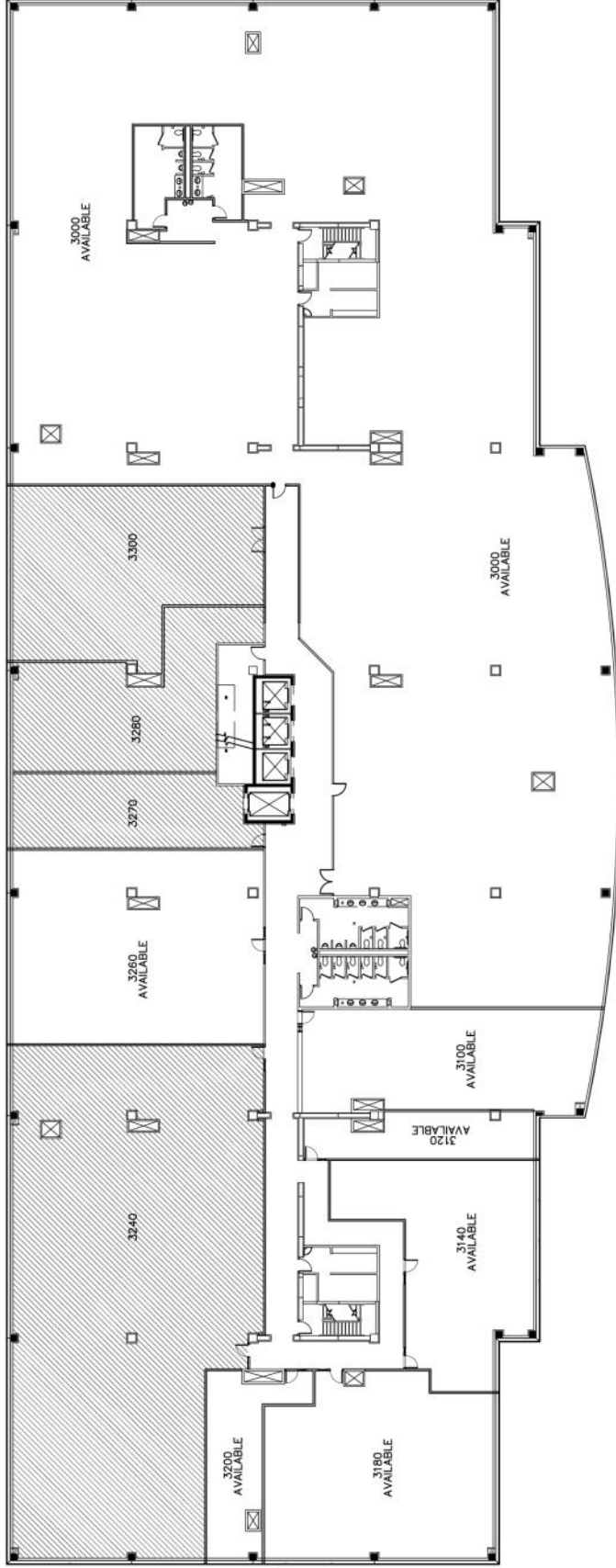
16201 E. Indiana Avenue, Suite 1000
Spokane Valley, WA 99216

Phone (509)328-3029 * Fax (509)325-3285



Available Immediately Space is Divisible.

All information herein is furnished by the owner; the agent however cannot be responsible for changes, errors, omissions or withdrawal of this offering without notice.



3 LEASE PLAN

SCALE: NOT TO SCALE