

## OFFICE SPACE FOR LEASE

# RIVER VIEW CORPORATE CENTER

16201 E. Indiana Avenue, Spokane Valley, WA 99216

Best Space – Best Price – Best Service



### Amenities Include:

- \* Located 12 minutes from Downtown
- \* Access to the Centennial Trail
- \* Two Conference Rooms--Internet and Phone Hookups
- \* Exercise Facility with Showers and Lockers
- \* Free Parking
- \* Great I-90 Access
- \* On-Site Management
- \* Upscale Tenant Improvements
- \* Full Service Lease
- \* Custom Designed Suites

Information and Video  
are available at our website.

[www.rvccspokane.com](http://www.rvccspokane.com)

FOR A SHOWING OR ADDITIONAL  
INFORMATION PLEASE CALL:

Jack Marr, Director of Leasing  
BLOCH RIVER VIEW, LLC

16201 E. Indiana Avenue, Suite 1000  
Spokane Valley, WA 99216

Phone (509)328-3029 \* Fax (509)325-3285

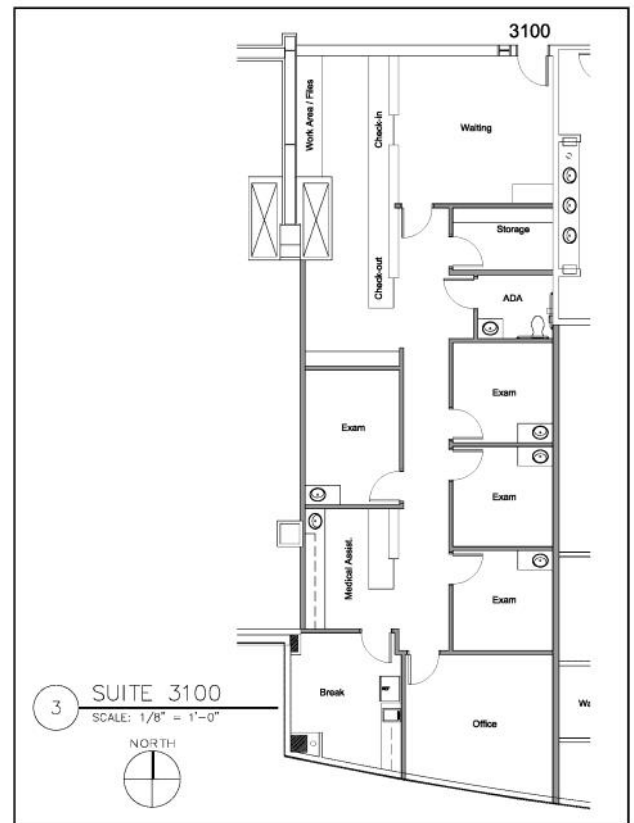
## SUITE 3100

### Medical Office

**2267** +/- RSF

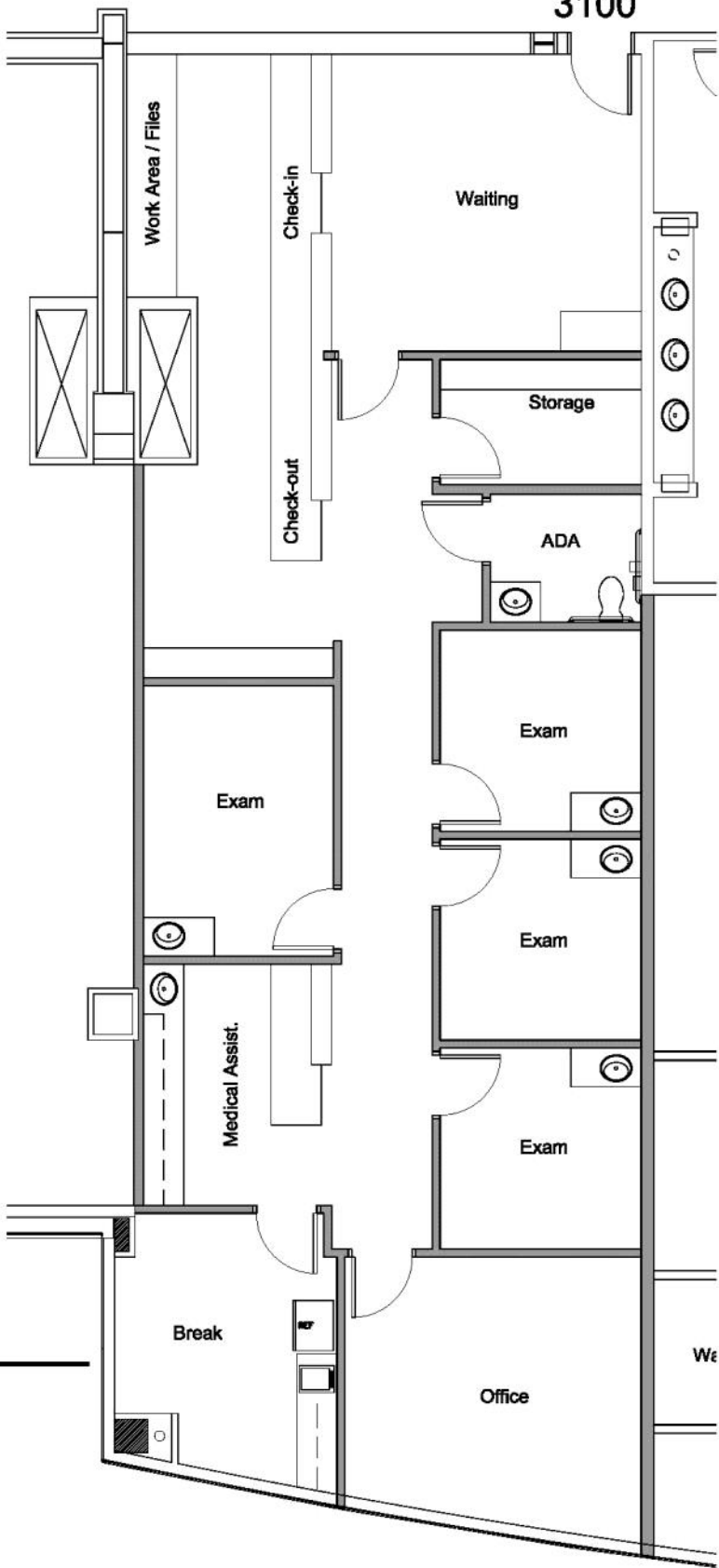
**Annual Rent: \$23-\$25/FT**

**Full-Service**



All information herein is furnished by the owner; the agent however cannot be responsible for changes, errors, omissions or withdrawal of this offering without notice.

3100



3

SUITE 3100

SCALE: 1/8" = 1'-0"

