

OFFICE SPACE FOR LEASE

RIVER VIEW CORPORATE CENTER

16201 E. Indiana Avenue, Spokane Valley, WA 99216

Best Space – Best Price – Best Service



SUITE 3140

2312+/- RSF
Annual Rent: \$24.00-\$25.50/FT
Full-Service

Amenities Include:

- * Located 12 minutes from Downtown
- * Access to the Centennial Trail
- * Two Conference Rooms--Internet and Phone Hookups
- * Exercise Facility with Showers and Lockers
- * Free Parking
- * Great I-90 Access
- * On-Site Management
- * Upscale Tenant Improvements
- * Full Service Lease—including Janitorial
- * Custom Designed Suites

Information and Video
are available at our website.

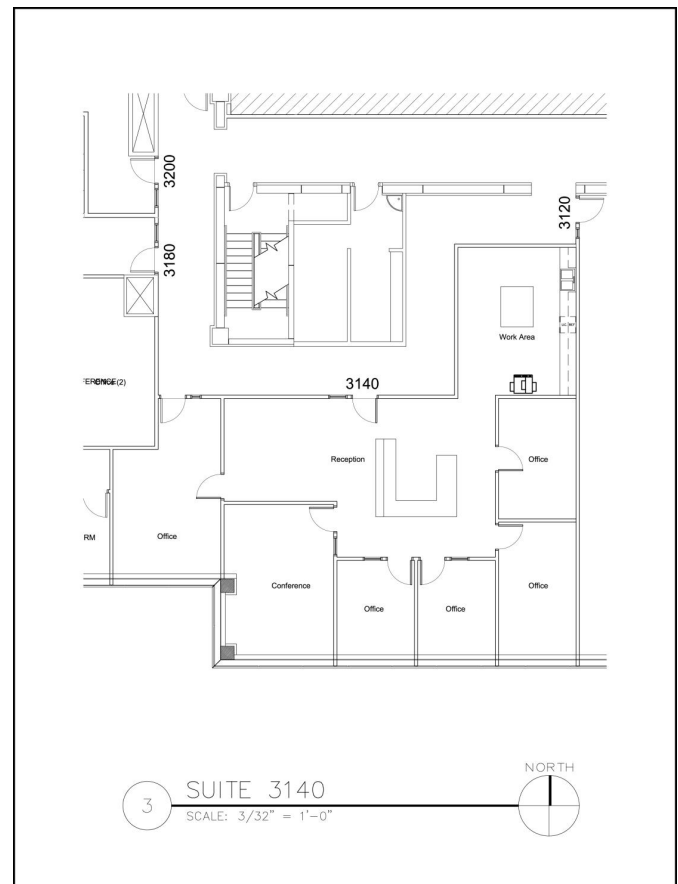
www.rvccspokane.com

FOR A SHOWING OR ADDITIONAL
INFORMATION PLEASE CALL:

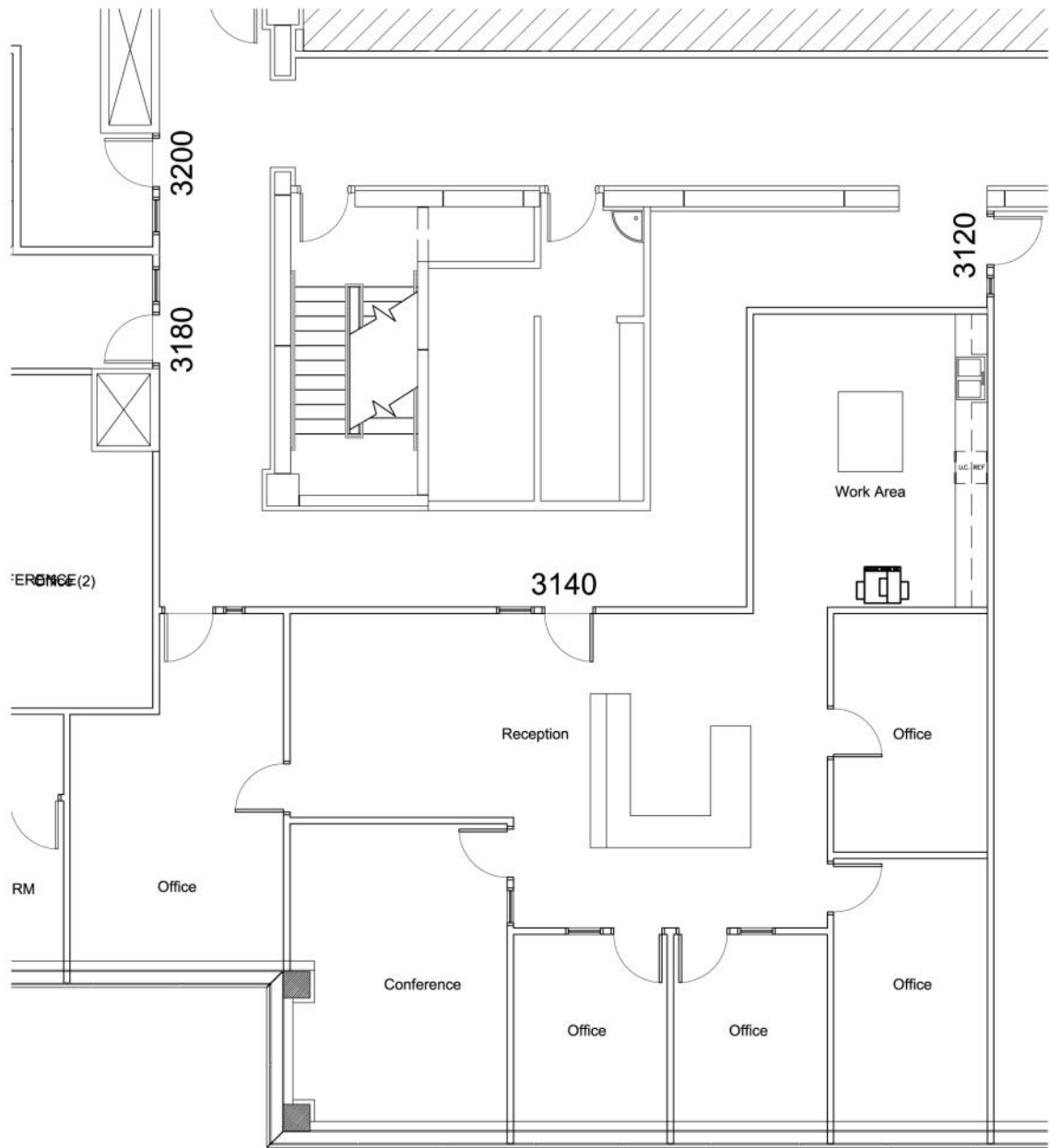
Jack Marr, Director of Leasing
BLOCH RIVER VIEW, LLC

16201 E. Indiana Avenue, Suite 1000
Spokane Valley, WA 99216

Phone (509)328-3029 * Fax (509)325-3285



All information herein is furnished by the owner; the agent however cannot be responsible for changes, errors, omissions or withdrawal of this offering without notice.



3

SUITE 3140

SCALE: 3/32" = 1'-0"

NORTH

