

## OFFICE SPACE FOR LEASE

# RIVER VIEW CORPORATE CENTER

16201 E. Indiana Avenue, Spokane Valley, WA 99216

Best Space – Best Price – Best Service



## SUITE 3180

**2,988 +/- RSF**  
**Annual Rent: \$24.00-\$25.50/FT**  
**Full-Service**

### Amenities Include:

- \* Located 12 minutes from Downtown
- \* Access to the Centennial Trail
- \* Two Conference Rooms--Internet and Phone Hookups
- \* Exercise Facility with Showers and Lockers
- \* Free Parking
- \* Great I-90 Access
- \* On-Site Management
- \* Upscale Tenant Improvements
- \* Full Service Lease
- \* Custom Designed Suites

Information and Video  
are available at our website.

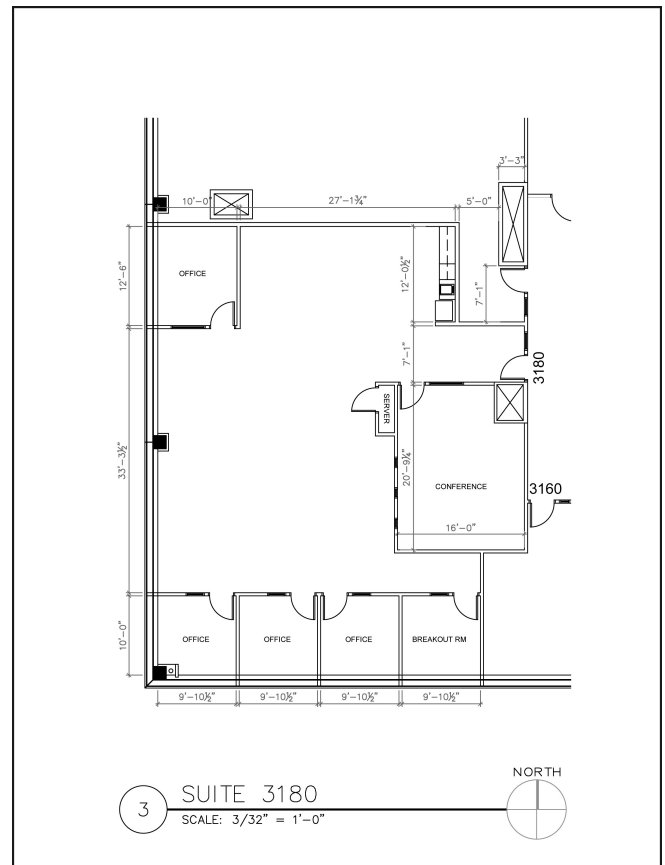
[www.rvccspokane.com](http://www.rvccspokane.com)

FOR A SHOWING OR ADDITIONAL  
INFORMATION PLEASE CALL:

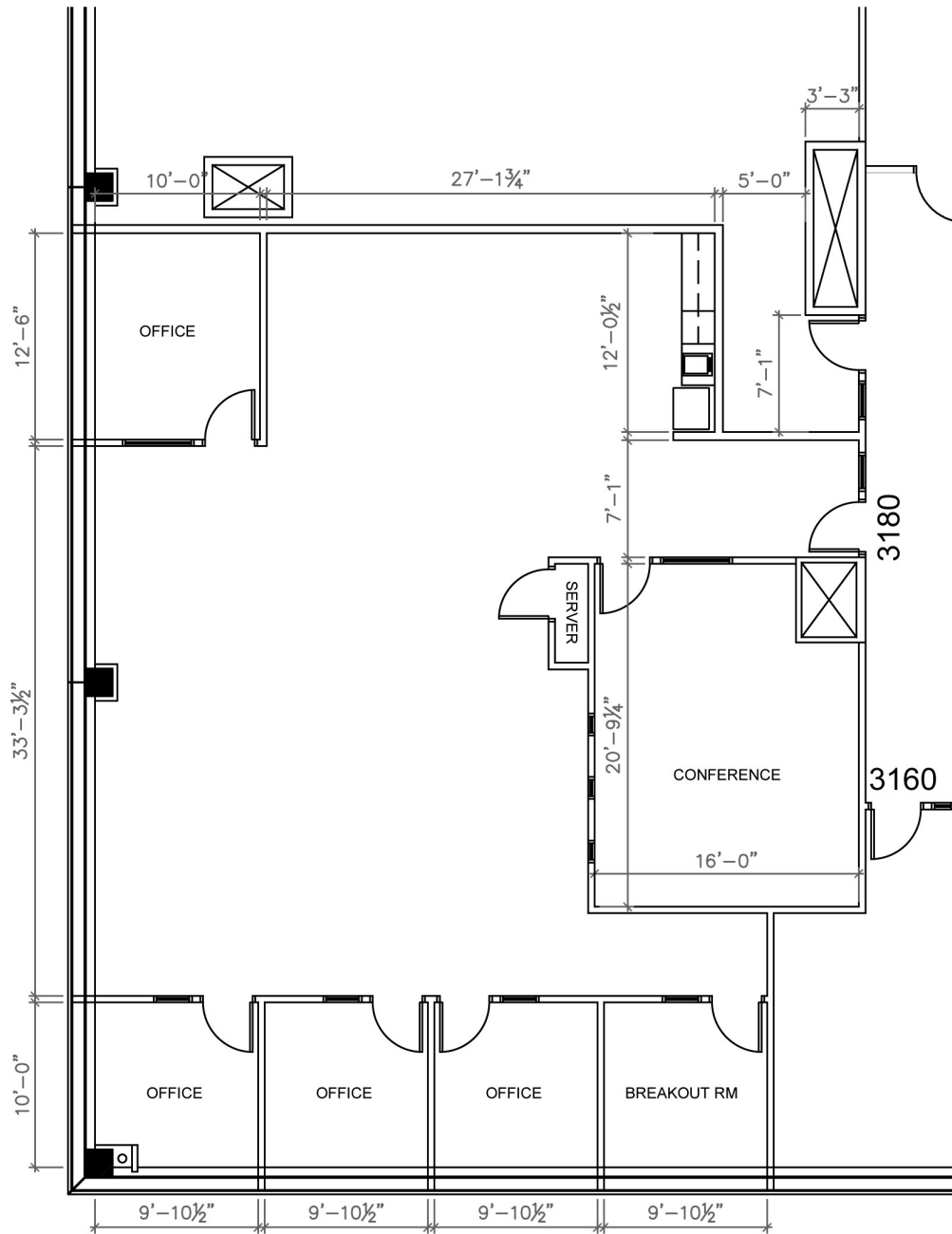
Jack Marr, Director of Leasing  
BLOCH RIVERVIEW, LLC

16201 E. Indiana Avenue, Suite 1000  
Spokane Valley, WA 99216

Phone (509)328-3029 \* Fax (509)325-3285



All information herein is furnished by the owner; the agent however cannot be responsible for changes, errors, omissions or withdrawal of this offering without notice.



3

SUITE 3180

SCALE: 3/32" = 1'-0"

NORTH

