

OFFICE SPACE FOR LEASE

RIVER VIEW CORPORATE CENTER

16201 E. Indiana Avenue, Spokane Valley, WA 99216

Best Space – Best Price – Best Service



Amenities Include:

- * Located 12 minutes from Downtown
- * Access to the Centennial Trail
- * Two Conference Rooms--Internet and Phone Hookups
- * Exercise Facility with Showers and Lockers
- * Free Parking
- * Great I-90 Access
- * On-Site Management
- * Upscale Tenant Improvements
- * Full Service Lease
- * Custom Designed Suites

Information and Video
are available at our website.

www.rvccspokane.com

FOR A SHOWING OR ADDITIONAL
INFORMATION PLEASE CALL:

Jack Marr, Director of Leasing
BLOCH RIVER VIEW, LLC

16201 E. Indiana Avenue, Suite 2240
Spokane Valley, WA 99216

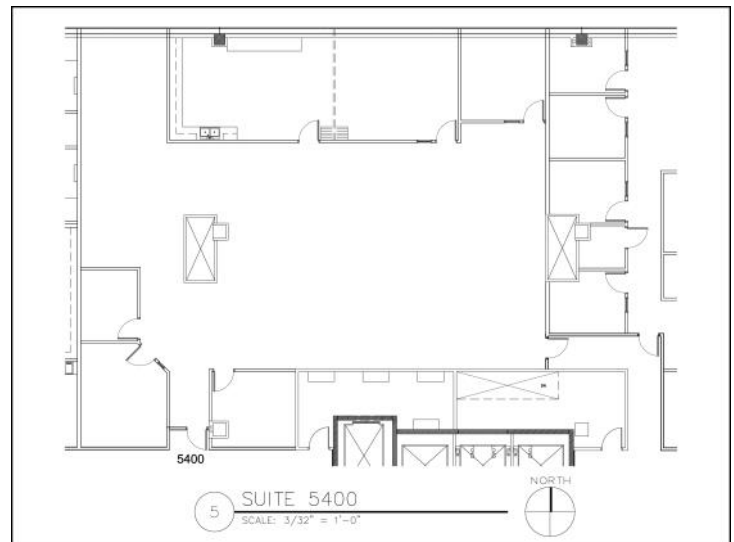
Phone (509)328-3029 * Fax (509)325-3285

SUITE 5400

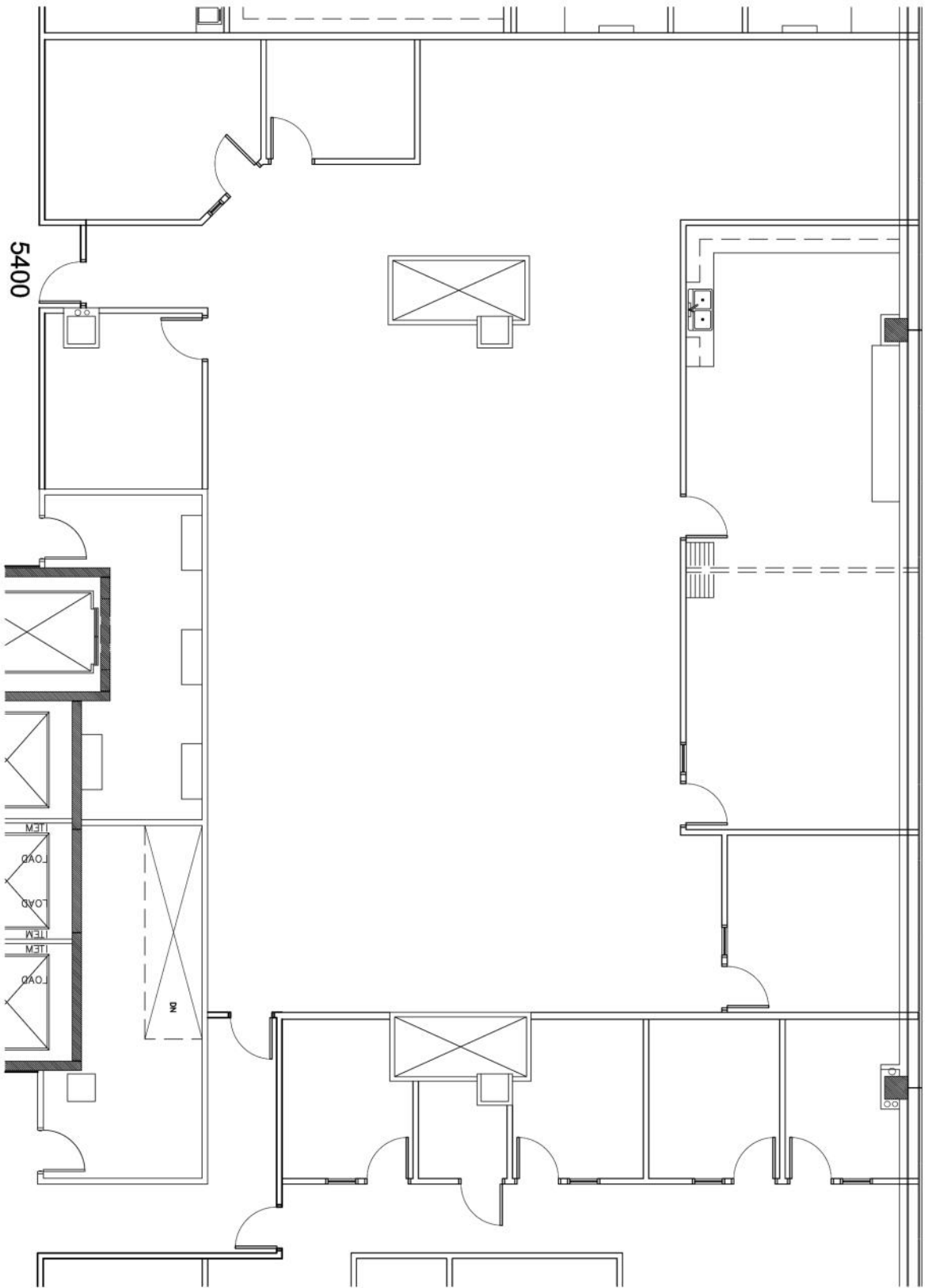
4,600+/- RSF

**Annual Rent: \$24.50-\$27.00/FT
Full-Service**

**Available December 1st
Possibly Sooner**



All information herein is furnished by the owner; the agent however cannot be responsible for changes, errors, omissions or withdrawal of this offering without notice.



5400

5

SUITE 5400

SCALE: 3/32" = 1'-0"



NORTH